



# LSY RF Admittance Level Switch for Solids & Powders

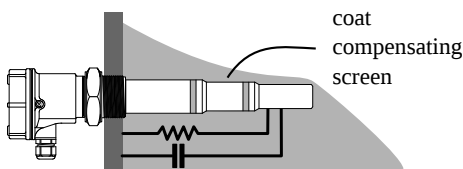
## Technical Specification



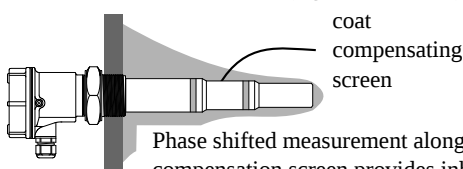
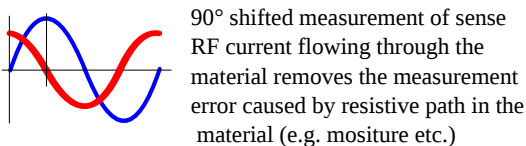
## Applications

- RF Admittance level switch probe is used in different applications like
  - Cement
  - Fly ash
  - Hot clinker
  - Lime stone
  - Plastic
  - Oil Extaction
  - Rice husk
  - Chemical
  - Grease
  - Dairy
  - Chocolate
  - Animal feed and pallets
  - Pharma
- Flush mount probe construction for small insertion to avoid heavy impact of lumps, rocks and bolder etc.

## Tru-Admittance Measurement



Bulk Material forms resistive path as well as capacitive path between sense and earth. The phase of current is 90° ahead in capacitor than that of voltage applied to it.



Phase shifted measurement along with compensation screen provides inherent immunity against the material coating

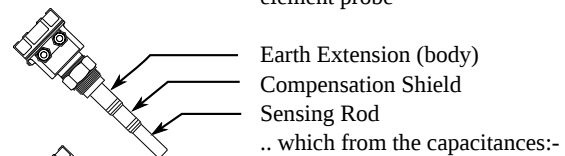
## Product Overview

Trumen RF admittance level switch model LSY is suitable for bulk solids, clinker and powders & use in all process industries like cement, fly ash, power, animal feed, material handling and material having coat forming tendency and even suitable for use in harsh enviornment conditions and up to 600 °C process temperature.

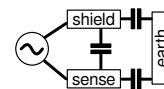
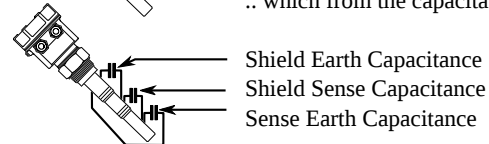
Trumen LSY is available with PTFE or Ceramic insulation rod probe or flexible rope probe depending on the process requirement.

## Operating Principle

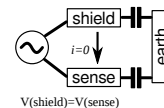
Trumen LSY having three element probe



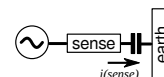
.. which from the capacitances:-



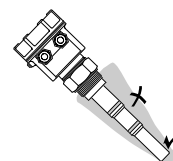
A Sine wave of high frequency is fed into both sensing rod as well as compensation shield.



Voltage at shield is equal to the voltage at sense, no effective current flows between sense and shield.



This removes shield-sense capacitance from the measurement.



shield-earth capacitance is simply ignored by not measuring it.

This removes the effect of material coating on probe.

Material is detected by measuring sense-earth capacitance.

## Features

- Compact size
- Fast switching response 1 sec
- Low power consumption
- Easy calibration via DIP switch
- Auto calibration facility
- 90° Phase shifted admittance measurement
- Static charge safe for fly ash, plastic and other applications
- High temperature endurable probes
- Active shield compensation against material build-up
- Ingress protection: IP 67/68 (as per IS/IEC 60529:2001)
- Electronic inserts support all requirements
- Process temperature max 600 °C
- Process pressure max. 20 bar
- Rigid rod / flexible rope probe version
- Threaded / flanged / customized process connections
- Remote electronics with standard 5 meters cable length

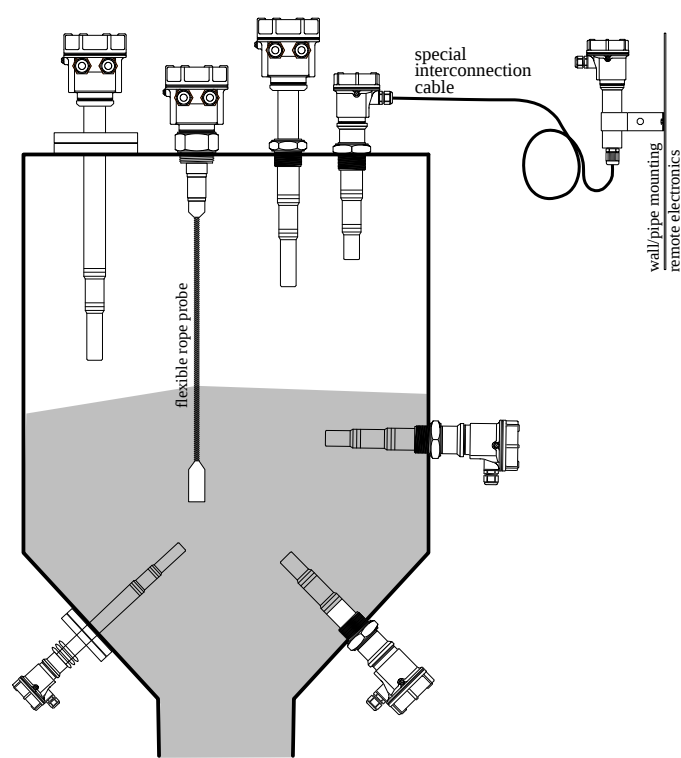
# LSY: RF Admittance Level Switch for Solids & Powders

## Performance Specifications

Parameter	Description
<b>General</b>	
Min. Dielectric Constant	1.6 (non-hygroscopic)
Reproducibility	±0.1 %
Accuracy	±0.3 %
Influence of medium temperature	Max +2 to -3 mm (-20 to +150 °C)
Sensor Cable	Remote electronics require special interconnection cable from probe to controller 5 meter standard length
<b>Process</b>	
Ambient Temperature	-20°C ... 80°C (-4°F ... 176 °F)
Process Temperature	-20°C ... 100°C (-4°F ... 212 °F)
Extended Process Temperature	PTFE Insulation: -30°C ... 250°C (-22 °F ... 482 °F), *Ceramic Insulation: -30°C ... 600°C (-22°F ... 1,112°F), (extensions & heat sinks required) (*Note- Ceramic part insulation probe suitable for non-conductive or low dielectric material only)
Process Pressure	Absolute / max. 20 bar (with PTFE insulation), absolute / max. 2.5 bar (with Ceramic insulation)
<b>Physical Specifications</b>	
Wetted Parts	SS-304, SS 316, SS-316L, PTFE, Part ceramic
Process Connections	NPT / BSP 1", 1-1/4", 1-1/2", 2", TC 1-1/2", 2" & Flanged ANSI / JIS / DIN / ASA / custom
Probe Insertion Length	Rigid Rod Probe: 50mm to 3,000mm, Flexible Rope Probe: 100mm to 10,000mm
<b>Approvals &amp; Certifications</b>	
ISO Certification	ISO 9001:2015
CE certification	All product comply as per directives 2014/35/EU Low Voltage Directive & 2014/30/EU Electromagnetic Compatibility Directive
RoHS Certification	RoHS Compliance as per RoHS Directive (2011/65/EU); Certificate No. RoHS-TTPL-2021-0305
Ingress Protection	IP67/68 as per IS/IEC 60529:2001
Ex-proof (Ex d T6 IIC)	Flameproof as per IS/IEC 60079-1:2014, Ingress Protection (IP-67) as per IS/IEC 60529:2001 Suitable for Gas Group: IIC, Suitable for Zone 1 & 2 atmospheres and Dust hazardous area Zone 21 & 22
Ex-ia Approval	Intrinsically safe according to the requirement of IS/IEC 60079-0:2011, IS/IEC 60079-11:2006 & IS/IEC 60529: 2001
EMC Certification	EMC Certified as per Standard IEC 61000-4-3, IEC 61000-4-2, IEC 61000-4-6, IEC 61000-4-29, IEC 61000-4-4, IEC 61000-4-5, CISPR 11
Vibration Test Certificate	Vibration complied as per IEC 60068 part 2-6 sinusoidal, 10-55Hz, 0.15mm

Specifications are subject to change without prior notice

## Typical Installation



# LSY: RF Admittance Level Switch for Solids & Powders



## Performance Specifications

Parameter	Description	Electrical Connection
<b>Electrical</b>		
<b>EIUD / ERUD</b>	Integral / Remote Electronics	
Supply	Universal power supply 15 to 80 VDC & 15 to 260 VAC 50 / 60Hz	
Output	1 DPDT potential free relay contact output	
Relay Rating	5 A each @ 24VDC or 220VAC	
<b>EIDP / ERDP</b>	Integral / Remote Electronics	
Supply	15 to 60 VDC	
Output	PNP Output single / 2 point (Pump) field settable	
Output Limit	250mA max. Short Circuit Safe	
<b>EIDL</b>	Integral Electronics	
Supply	15 to 60 VDC	
Output	Two wire DC supply with 8 / 16mA current output suitable for 4-20mA analog inputs	
Output Limit	8mA (±1mA max) / 16mA (±1mA max)	
<b>EIFS / ERFS</b>	Integral / Remote Electronics specially designed with special output	Electrical connection depends on selected model code

# LSY: RF Admittance Level Switch for Solids & Powders

## Ordering Information

LSY **Hxx** - **Tx** - **Rx** - **Sx** - **Ix** - **Gx** - **Px** - **Cx** - **Exxx** - **Lxxxx**

### Enclosure

**HAN:** Aluminum Non-Hazardous IP-67/68  
**HAX:** Aluminum Flameproof Ila, I Ib and I Ic  
**HSN:** Stainless steel  
**HES:** Specially designed as per customer requirement

### Material Temperature

**T1:** max 80°C  
**T2:** max 200°C  
**T3:** max 250°C  
**T4:** max 600°C  
**TS:** Customer specified special designed

### Sensor rigid / flexible type

**RD:** Rigid Rod Probe  
**RPS:** Flexible Rope Probe for solid (6mm)  
**RPT:** Flexible Rope Probe for solid (12mm)  
**RS:** Specially designed probe

### Sensing Rod/Rope Material

**S4:** SS 304  
**S6:** SS 316  
**SL:** SS 316L  
**SS:** Special Surface

### Insulation type

**IP:** Partly PTFE insulated  
**IT:** Full PTFE insulated  
**IC:** Partly ceramic insulated

### Sensor Extension Material

**G4:** SS 304  
**G6:** SS 316  
**GL:** SS 316L  
**GS:** Special material

### Insertion Length

**Rigid Rod Probe:**  
50mm to 3,000mm  
**Flexible Rope Probe:**  
100mm to 20,000mm

### Electronics (Refer page 3 for detail description)

**EIUD:** 1 DPDT relay O/P  
**EIDP:** PNP O/P single / 2 point  
**EIDL:** 8/16mA & 4-20mA O/P  
**EIFS:** Special O/P  
**ERUD:** Remote Electronics with 1 DPDT relay O/P  
**ERDP:** Remote Electronics with PNP O/P single / 2 point  
**ERFS:** Remote Electronics with special O/P

### Process Connection Material

**C4:** SS 304  
**C6:** SS 316  
**CL:** SS 316L  
**CS:** Special Material

### Process Connection Type

**PB1:** 1" BSP  
**PB2:** 1-1/2" BSP  
**PB4:** 1-1/4" BSP  
**PB5:** 2" BSP  
**PN1:** 1" NPT  
**PN2:** 1-1/2" NPT  
**PN4:** 1-1/4" NPT  
**PN5:** 2" NPT  
**PT1:** 1-1/2" Triclover/Triclamp  
**PT2:** 2" Triclover/Triclamp  
**PFL:** Flanged Type (Fxxx)  
**F001:** 1/2" B16.5 ANSI/ASA 150#RF  
**F002:** 3/4" B16.5 ANSI/ASA 150#RF  
**F003:** 1" B16.5 ANSI/ASA 150#RF  
**F004:** 1-1/4" B16.5 ANSI/ASA 150#RF  
**F005:** 1-1/2" B16.5 ANSI/ASA 150#RF  
**F006:** 2" B16.5 ANSI/ASA 150#RF  
**F007:** 2-1/2" B16.5 ANSI/ASA 150#RF  
**F008:** 3" B16.5 ANSI/ASA 150#RF  
**F009:** 4" B16.5 ANSI/ASA 150#RF  
**F010:** 5" B16.5 ANSI/ASA 150#RF  
**F011:** 6" B16.5 ANSI/ASA 150#RF  
**PCS:** Special Process Connection