

Boot Level Switch for Bulk Media

- ❖ Max. Temperature : upto 200°C
- ❖ Easy to Install
- ❖ Self Cleaning
- ❖ Handles a Wide Range of Bulk Material
- ❖ Membrane Material : Stainless Steel
- ❖ Continuous operation without maintenance
- ❖ No auxiliary energy necessary
- ❖ No sensor parts inside of the silo, hopper, or bin
- ❖ Adjustable sensitivity
- ❖ High reliability
- ❖ Versatile and universally even in very coarse grain bulk solids applicable



Intended use

Reinforced membrane level indicator. Is to be used to control normally the minimum level of bulk solids in silos or vessels & with high density bulk goods or with a high abrasion to the membrane due to the product.

These controllers consist of a switch actuated by a membrane and it is recommended for dusty and powdery, granulated & grainy bulk goods like dust, flour, grain, sand, plastic, etc. with an easy flow and a bulk density from 0.3 to 2.5 t/m³.

Function

The membrane must to be exposed to the material. The movement of the switch is the result of the pressure exerted by the incoming bulk material against the membrane which forces the membrane to move backwards, reversing the position of the switch and the signal is used for example to control the transport system in the silo.

The models "A-100", "AD", "SR" y "CD2M" and the models with S.S. membrane have a regulation system by a spring that allows the adjustment of the sensitivity. Tightening the regulation nut to reduce the sensitivity and increase the strain of the material to activate the microswitch. Clockwise insensitive.

The models are adjusted at their maximum sensitivity. It is necessary to ensure the proper pressure to the membrane that returns the membrane when there is no product covering it.

Mechanical connection

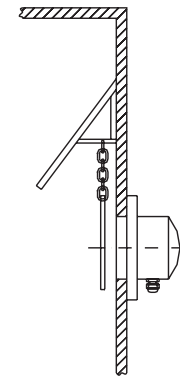
Drill holes in the silo or vessel & mount the indicator using screws, rods, fasteners or nuts M6 making sure of the easy flow of the material and ensure that the product leaves the membrane without product on it.

Common Media

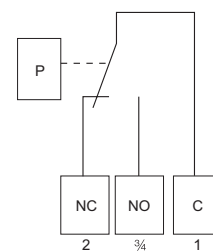
- | | |
|------------------------|------------------------|
| ❖ Alum | ❖ Nuts |
| ❖ Bauxite | ❖ Fruit |
| ❖ Ceramics | ❖ Pearlite |
| ❖ Dolomite | ❖ Quartz sand |
| ❖ Peas, Peanuts | ❖ Rice |
| ❖ Fish Meal | ❖ Sand, Slag |
| ❖ Gravel | ❖ Clay |
| ❖ Oats, Hazelnuts | ❖ Various Granulates |
| ❖ Insulating Materials | ❖ Wheat |
| ❖ Coffee Beans | ❖ Miscellaneous Grains |
| ❖ Long Grain Rice | ❖ Sugar |
| ❖ Corn, Almonds | ❖ Stones |
| ❖ Crushed stones | ❖ Clinker |
| ❖ Cement | ❖ Lime |
| ❖ Concrete | ❖ Mixture of minerals |



Example Guard



Wiring Diagram

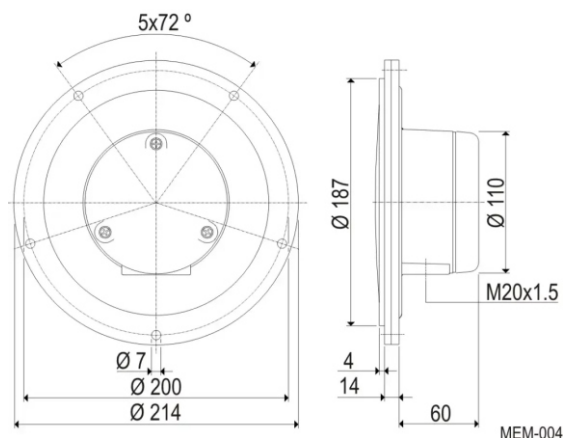


Technical Details

Installation Position :	Vertical
Maintenance :	None
Cable Entry Fitting :	M20 x 1.5
Contact Loading Capacity :	15 A / 250 V AC (for resistive loads)

Model - AD INOX

Most Economical (Dim. in mm)



Technical Specification :

- ❖ Ambient pressure : Atmospheric
- ❖ Maximum pressure : +0,5 bar
- ❖ Cable entry : M20 x 1.5
- ❖ Maximum voltage : 250 V AC
- ❖ Contact function : 1 NO + 1 NC
- ❖ Capacity of the contact : 15 A / 250 V AC (for resistive loads)
- ❖ Product temperature : -20° C – +200° C
- ❖ Ambient temperature : -20° C – +80° C
- ❖ Protection : IP65, according to DIN EN60529
- ❖ Weight : 1.85 Kg
- ❖ Sensitivity : 200 – 500 g adjustable

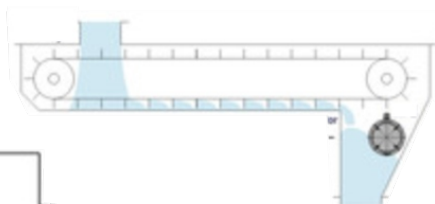
Materials

- ❖ Housing : Aluminium, RAL 7001 coated
- ❖ Membrane : Stainless Steel
- ❖ Mounting ring and screws : Aluminium ring, RAL 7001 coated and screw Zincated Steel (Under request Stainless Steel 1.4301)

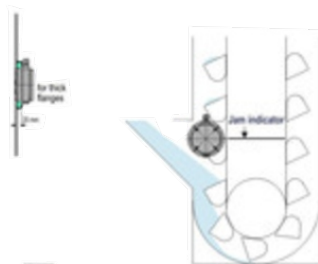
Application :

- ❖ Bucket elevator
- ❖ To maintain low level of bulk solid in silos or vessels
- ❖ Chute jam
- ❖ Screw conveyor jam detector

Silos and container



Level indicators for bulk solids



Conveyor screw

