

# Chemical Industry



**PARSHVI**  
TECHNOLOGY (INDIA) PVT. LTD.



**Note : All Sensors Available in ATEX  
and Flame Proof Version.**

**Represented by :**



**PARSHVI**  
TECHNOLOGY (INDIA) PVT. LTD.

C/303-304, 3rd Floor,  
Pushp Business Campus,  
SP Ring Road, Vastral,  
Ahmedabad - 382418 (Guj) INDIA  
Phone : +91-7069004227, 8128705212  
E-mail : [info@parshvitechnology.com](mailto:info@parshvitechnology.com)  
<https://www.parshvitechnology.com>

## RTD Probes & Temperature Transmitter

### Specification :

#### RTD Probes

- ❖ Process Connection : Triclover & Thread
- ❖ Dia: 6 mm ❖ Length : Customize
- ❖ Weather proof Aluminium Dia. Head IP 65

#### Temperature Transmitter (Make : Pixsys)

- ❖ Programming : Wireless with Mobile Application (No wiring required)
- ❖ Input : Thermocouple/ RTD (PT100/ PT1000)
- ❖ Output : 4...20mA Loop Powered
- ❖ Power supply : operating range 6-32 Vdc
- ❖ Fixing : On DIN/B head
- ❖ 3600 Point Data Logging



**Application :** Hygienic/ Utility Process

## Non-Contact Infrared Temperature Sensor (Pyrometer)

### Model : PyroCouple (Make : Calnex)

#### Specification :

- ❖ Choice of temperature ranges from -20°C to 500°C
- ❖ Durable, robust stainless steel 316 housing
- ❖ Output : 4-20 mA, Type K or J thermocouple, or 0-50 mV
- ❖ Fast response with high stability ❖ Sealed to IP65



**Application :** Dryer Outlet Material Temperature ❖ Chemical Reactor

## Non-Contact Infrared Temperature Sensor for Multi-Channel Systems

### Make : Calnex

#### Specification :

- ❖ RS-485 Modbus interface
- ❖ Measures temperatures from -20°C to 1000°C
- ❖ For use in ambient temperatures of up to 120°C without cooling
- ❖ Compatible with third-party RS-485 Modbus Master devices, or Calnex touch screen interface
- ❖ 6-channel temperature display with configuration, alarms and data logging
- ❖ Analogue and alarm relay outputs via optional modules
- ❖ Build larger systems using the PM180's separate Modbus Master and Slave interfaces

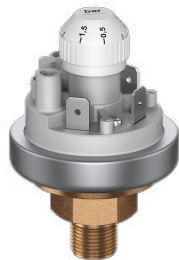


## Adjustable/ Gas / Vacuum Pressure Switch

### Model : 901P (Make : Beck GmbH)

#### Specification :

- ❖ Pressure Range : -700 mbar to 12 bar
- ❖ Max. operating pressure : 0.5/25 bar
- ❖ Diaphragm material : NBR
- ❖ Process connection : 1/4", BSP thread
- ❖ Material : Brass
- ❖ Accessories : IP65 cover cap



#### Application :

- ❖ Monitoring the Overpressure of Combustible Gases
- ❖ Gas Burner, Boiler Pressure

## Pressure Transmitter & Digital Pressure Switch

#### Specification :

- ❖ Measuring ranges from 100mbar to 600bar
- ❖ Absolute, gauge and sealed gauge
- ❖ Accuracy:  $\pm 0.25\%$ FSO or  $\pm 0.5\%$ FSO
- ❖ Calibrated and temperature compensated
- ❖ Stainless steel construction
- ❖ Piezoresistive pressure sensor design
- ❖ Variety of pressure & electrical connections
- ❖ Output 4...20mA, 0...10V, 0...5V and others



#### Application :

- ❖ Process Control Systems/ Utility
- ❖ Refrigeration and HVAC Controls ❖ Pumps and Compressors

## Draft Pressure Transmitter

### Model : 985M (Make : Beck GmbH)

#### Specification :

- ❖ Range : 0-1000mmWC (other on request)
- ❖ Supply Voltage : 18 ... 30 VAC / VDC
- ❖ Output : 4 ... 20 mA or 0 ... 10 V, 3-wire or 4 ... 20 mA, 2-wire is also available
- ❖ With switching output
- ❖ Linearity :  $\leq \pm 0.5\%$  FS, min.  $\pm 1$  Pa
- ❖ Working temperature : -20 ... 70°C
- ❖ Protection class : IP65
- ❖ Display : with LED-display, 4 digits (only for 3-wire)
- ❖ Process connection P1 and P2 : Stainless steel - Hose pipe
- ❖ Connection with 4 / 6 mm outer diameter



#### Application :

- ❖ Draft Pressure Measurement of ID/FD Fan

## DP Switch & Transmitter in Aluminum IP68 Enclosure

#### Specification :

- ❖ Range : 0 ... 500 mmWC (other on request)
- ❖ Supply voltage : 18 ... 30 VDC
- ❖ Output : 4 ... 20 mA, 2-wire
- ❖ Process connection P1 and P2 : Stainless steel -Hose pipe connection with 4 / 6 mm OD / 1/2" NPT also available
- ❖ Display : Optional
- ❖ Accuracy : 0.5% of FS



## Digital Differential Pressure Transmitter with 2 relays

### Model : 990M (Make : Beck GmbH)

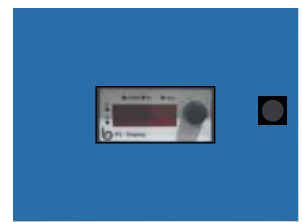
#### Specification :

- ❖ Range : 0 to 2.5 bar
- ❖ Pressure unit : mmWC, Pa, mbar
- ❖ Power Supply : screw terminals 24 VAC/VDC
- ❖ Output : 4 ... 20 mA or 0 ... 10 V, 3-wire
- ❖ Switching output : 2 relays with 50VAC/5A (S1) and 250VAC/5A (S2) switching capability
- ❖ Display : Red 7-segment LED display, 4-figure
- ❖ Accuracy :  $\leq \pm 1\%$  of FS
- ❖ IP65 – SS/ MS enclosure with process connection : 2 - Hose connection with 4 mm outer diameter



#### Application : Scrubber/ De-Duster

- ❖ Bag Filter Pressure Monitoring



## Differential Pressure Transmitter for Liquids

### Model : 988 (Make : Beck GmbH)

#### Specification :

- ❖ Range: 0-2.5, 0-6, 0-10 bar (Special measuring ranges on request)
- ❖ Supply : 18 – 30 V AC/DC
- ❖ Output signal: 0-10 Volt & 4 to 20 mA
- ❖ Process connection: 2 x inner thread G1/4 Axial
- ❖ Accuracy :  $\pm 0.4\%$  (typ.) /  $\pm 1.0$  (max.)
- ❖ Protection class : IP65



#### Application :

- ❖ Differential pressure measurement between supply and return in heating systems
- ❖ Secondary variable pump control in chiller management
- ❖ Cooling systems for heating / air conditioning



### Portable Digital Manometer + Air Velocity Meter

**Model : EMA 200 (Make : Halstrup-walcher)**

**Specification :**

- ❖ Range :  $\pm 200$  Pa
- ❖ Velocity range : 5 ... 58 m/s
- ❖ Display : 3 1/2" Digit, LCD
- ❖ Accuracy :  $\pm 0.5\%$  of max. value
- ❖ Operating temperature : 0 ... 50°C
- ❖ Power supply : 9 V battery with calibration certificate

**Accessories:**

- ❖ L - shape pitot tube
- ❖ Length : 600 mm
- ❖ MOC : Stainless steel
- ❖ Process connection : 6 mm hose



**Application :** Testing and Commissioning Purpose

### Membrane/ Boot/ Overflow Level Switch

**Make : Filsa**

**Specification :**

- ❖ Product temperature : -20° C – +200°C
- ❖ Sensitivity : 200 – 500g adjustable
- ❖ Protection : IP65
- ❖ Density of the product : 0,3 t/m<sup>3</sup> – 2,5 t/m<sup>3</sup>
- ❖ Diphagm material : SS/ NBR



**Application :** Screw Conveyor / Chute Jam Detection

- ❖ Bucket Elevator

### Pendulum Level Indicators

**Model : MS-1 (Make : Filsa)**

**Specification :**

- ❖ Rod length : Upto 2000 mm
- ❖ Product density : 0,3 t/m<sup>3</sup> – 3 t/m<sup>3</sup>
- ❖ Maximum pressure : +0,5 bar
- ❖ Switching function : 1 NO + 1 NC
- ❖ Capacity of the contact : 15 A / 250 V AC (for resistive loads)
- ❖ Bulk good temperature : -25° C – +80° C
- ❖ Type of protection : IP66 according to DIN En60529
- ❖ Materials : Housing Aluminium, RAL 7001 coated

**Application :**

- ❖ High Level Control in a Coal Bunker



### pH Electrode

**Make : Kuntze Instrument**

**Specification :**

- ❖ High alkali high temperature glass
- ❖ Measuring range pH 0.. 14
- ❖ Very small alkaline error
- ❖ Suitable for temperatures up to 135 °C (275 °F)
- ❖ Long service life due to refillable reference electrode
- ❖ High quality Zirkon junction for reliable measurement results
- ❖ Dirt-repellent and corrosion resistant PTFE junction
- ❖ Integrated temperature sensor
- ❖ Process Connection : Vario pin (PG 13.5)
- ❖ Reference System: Ag / AgCl / Solid electrolyte
- ❖ Max. Pressure : < 10 bar

**Application :**

- ❖ Scrubber System
- ❖ Low Iconic Boiler Feed Water
- ❖ Drinking Water Treatment
- ❖ ETP ❖ Fermentation Process



### Total Chlorine, Free Chlorine, Chlorine Dioxide, Ozone, or Hydrogen Peroxide Measurement

**Make : Kuntze Instrument**

**Specification :**

- ❖ Automatic cleaning by ASR® possible
- ❖ Low maintenance due to gel filling
- ❖ Stable zeropoint
- ❖ High quality Zirkon® junction for reliable measurement results
- ❖ Max. Pressure: < 10 bar at 20 °C
- ❖ Temperature: -5...+70 °C
- ❖ Electrode Material: 2 Gold rings
- ❖ Process Connection: M12 Plug



**Measuring Parameter**

- ❖ Total Chlorine, Free Chlorine & Chlorine Dioxide :  
Up to 1000 µg/l ; up to 5,00 ; 10,00 ; 20,00 mg/l
- ❖ Ozone : Up to 1000 µg/l ; up to 5,00 ; 10,00 mg/l
- ❖ Hydrogen Peroxide : Up to 30,00 mg/l

**Application :**

- ❖ Drinking Water
- ❖ Process Water
- ❖ Waste Water Treatment



### Liquid Analyzer - pH/ ORP/ Optical Dissolve Oxygen Sensor

**Model : AER Series**

**Specification :**

- ❖ 48 x 96 mm, panel mounting type
- ❖ Drip-proof/Dust-proof IP66 (for front panel only)
- ❖ Power supply : 100 to 240 VAC (standard)
- ❖ 2-points Contact output (standard)
- ❖ Proportional control, max. 4 points of relay contact
- ❖ Various settings & calibration via software communication (RS-485) (optional)



**Application :**

- ❖ Water Treatment ❖ Low Iconic Boiler Feed Water ❖ ETP

### Stack Dust Monitoring Device - QAL1 Certified

**Model : PFM20 (Make : Dr. Födisch)**

**Specification :**

- ❖ Compact device with aluminum housing
- ❖ Probe rod length : 500 mm
- ❖ Measuring range of dust : lowest certificated range 0 -7.5 mg/m<sup>3</sup> dust, max. measuring range 0...250 mg/m<sup>3</sup> dust
- ❖ Exhaust gas temperature : max. 280 °C
- ❖ Flow velocity : min. 5 m/s
- ❖ Protection degree : IP65
- ❖ Analog input : 1 x 4...20 mA for external velocity v [m/s]
- ❖ Analog output : 4 ... 20 mA, electrically isolated
- ❖ Digital outputs : 4 potential free contacts for failure
- ❖ Power supply : 110 V / 230 VAC
- ❖ Process connection : welding sleeve with Tri-Clamp fastener



**Application :** Stack Dust Emissions Measurement

### Solid Flow Monitor (BBD Sensor)

**Model : PFM 13C (Make : Dr. Födisch AG)**

**Specification :**

- ❖ Probe : tribo-electric probe consisting of rod and head
- ❖ Probe rod : electrically isolated from housing
- ❖ Immersion depth : 500 mm
- ❖ Measuring range of dust : 0...100% (qualitative)
- ❖ Analogue output : 4...20 mA, 2-wire transmitter
- ❖ Galvanically isolated to device ground
- ❖ Power supply : 24 VDC (max. +25%, -10%)
- ❖ Exhaust gas temperature : max. 260°C
- ❖ Process connection : welding sleeve with Tri-Clamp fastener
- ❖ Housing : IP 65, protection class 1

**Application :** Broken Bag Leak Detector/ FBD



### Air Velocity Transmitter with S - Type Pitot Tube

**Model : 985V (Make : Beck GmbH)**

**Specification :**

- ❖ Range : 0 ... 1 KPa (10 mbar)
- ❖ Velocity range : 0 ... 30 m/s
- ❖ Supply voltage : 18 ... 30 VAC / VDC
- ❖ Output : 4 ... 20 mA or 0 ... 10 V, 3-wire
- ❖ With switching output
- ❖ Display : LED display, red, 4 digits
- ❖ Accuracy :  $\pm 1\%$  FS, min.  $\pm 1$  Pa
- ❖ Protection class : IP65

**Accessories:**

- ❖ S-type pitot tube (Stainless steel)
- ❖ Length : 500 mm
- ❖ OD : 6 mm
- ❖ Mounting type : cleat or flange

**Application :** Duct Velocity Measurement



### Vibration Monitoring Sensor

**Model : HE050 (Make : Hauber Elektronik)**

**Specification :**

- ❖ Vibration Monitoring Sensor
- ❖ Housing material and fastening : 1.4305 (V2A) with fastening M8 x 8; pitch 1.25 mm (standard)
- ❖ Output : 4 – 20 mA, 3 wire
- ❖ Measuring range : 0 – 25 mm/s rms (other on Request)
- ❖ Electrical Connection : M12 connector
- ❖ Measuring head temperature : -40°C ... +85°C
- ❖ Protection class : IP 66/67
- ❖ Frequency range : 10 – 1,000 Hz

**Application :** Fan & Blower Vibration Measurement



### DIN Rail PID Controller

**Model : DCL 33 (Make : Shinko)**

**Specification :**

- ❖ Multi-input:total 18 types of input
- ❖ Loop Break Alarm output
- ❖ Compact Design
- ❖ Galvanic Isolation 1.5 kV
- ❖ Sampling Time 125 ms
- ❖ User-Friendly Operation & Configuration
- ❖ Password Protection for Configuration
- ❖ Calibration of Transmitter by Key Pad

**Application :**

- ❖ Universal Isolated Digital Temperature Transmitter
- ❖ Digital Temperature Switch



### Exner Retractable Fittings

**Model : EXstatic 310, EXstatic 311 (Make : Exner)**

**Specification :**

- ❖ Robust design, integrated PTFE scraper
- ❖ Extension of sensor-lifetime and reducing of maintenance efforts
- ❖ Automatic safety lock while sensor is removed
- ❖ Plug and play installation, colour- and size-coded connectionsystem
- ❖ Integrated limit switches
- ❖ Usable in ATEX-areas
- ❖ Static probe housing with clamp connection
- ❖ Immersion length up to 90mm
- ❖ Up to 16 bar and 140 °C
- ❖ Stainless steel AISI 316L / 1.4404 or Alloy C22
- ❖ Can be fully automated with pneumatic or electro-pneumaticcontrol units
- ❖ Drive unit free of maintenanc

**Application :**

- ❖ For all kind of Ø12/120mm sensors with thread PG13.5 (pH-glass- and ISFET sensors, conductivity- or temperature sensors, turbidity and other optical sensors)



### Digital Process Indicator

**Model : JIR (Make : Shinko)**

**Specification :**

- ❖ Compact Design
- ❖ Galvanic Isolation 1.5 kV ( Input, Output and Power Supply )
- ❖ Sampling Time 125 ms
- ❖ User-Friendly Operation and Configuration
- ❖ Password Protection for Configuration
- ❖ IP66 Protection Class for Front Flush
- ❖ Standard Retransmission Output ( 4-20 mA, 12000-bit Resolution)
- ❖ CE and UL approved
- ❖ 3 Points Alarm output
- ❖ Lower Power Consumption (8VA), Longer Life of Electronics Modules
- ❖ Loop Break & Sensor Burnout Alarm
- ❖ Multi-input : total 18 types of input



### Signal Conditioner with Isolated Single/ Dual Output

**Model : MS3700, MS3000 Series**

**Specification :**

- ❖ Integrated with burnout protection function
- ❖ Anti-humid coating on PCB are standard for improved environmental protection
- ❖ Drop-proof screw terminals for ease of installation
- ❖ No special spacing is required between the units
- ❖ Micro Probe System (MPS)
- ❖ Synchro-analog Coverter MS781
- ❖ Alarm Setter with Dual / Quad Output (DC Signal), MS5405DC have just released.
- ❖ FAST RESPONSE MODEL of MS3786 Direct Current Signal Conditioner have just released
- ❖ Built-in signal selector switches
- ❖ 5-way isolation between Input, Output 1, Output 2, Power, and Ground
- ❖ Separate ZERO / SPAN adjustment of Output 1 and Output 2
- ❖ No need for installation and removal of input resistor (250 ohms) for signal switching

**Application :** Isolated Thermocouple Temperature Transmitter

- ❖ Potentiometer Transmitter with Isolated Single/Dual Output
- ❖ CT and PT Transmitter



### Inline Optical Brix Monitor

**Model : DCM-20 (Make : KxS Technologies)**

**Specification :**

- ❖ Refractive Index range : Full range, nD=1.3200...1.5300 (=definition to 0...100%wt)
- ❖ Output units : Brix/ Conc% / g/cm3 / refractive index RIU
- ❖ Measurement precision :  $\pm 0.025$  Brix/%wt Accuracy :  $\pm 0.0002$  RIU
- ❖ Speed of response : 1 sec. undamped
- ❖ Temperature compensation : Automatic, individual zero point calibration
- ❖ Process connection : 1.5" & 2.5" sanitary connection, Varinline® and APV tank bottom flange
- ❖ Process pressure : 9-55 bar
- ❖ Process temperature : -40°C ...100°C continuous process temperature Withstands 130 °C CIP and SIP sequences
- ❖ Sensor protection class : IP67, Nema 4X
- ❖ Power Supply : 24 VDC
- ❖ Output : 2 pcs independent 4-20 mA user configurable outputs



**Application :**

- ❖ Inline Liquid Concentration Measurement for Chemicals Processing