

# Instruments for Dairy & Pharma

## Process Machineries



**PARSHVI**  
TECHNOLOGY (INDIA) PVT. LTD.



**PARSHVI**  
TECHNOLOGY (INDIA) PVT. LTD.

C/303-304, 3rd Floor,  
Pushp Business Campus,  
SP Ring Road, Vastral,  
Ahmedabad - 382418 (Guj) INDIA  
Phone : +91-7069004227, 8128705212  
E-mail : [info@parshvitechnology.com](mailto:info@parshvitechnology.com)  
<https://www.parshvitechnology.com>

### RTD Probe with Temperature Transmitter

**Model : RTD Probe**

**Specification :**

**RTD Probe**

- ❖ PT100 (3 Wire simplex)
- ❖ Process Connection : 1.5" TC (50.5 mm)
- ❖ Dia: 6 mm
- ❖ Length: up to 100 mm. (Other on Request)
- ❖ Weather proof Aluminium Dia. Head IP 65

**Temperature Transmitter (Make : Pixsys)**

- ❖ Programming : Wireless with Mobile Application ( No wiring required)
- ❖ Input : RTD (PT100/Ni100/PT1000)
- ❖ Output : 4...20mA Loop Powered
- ❖ Power supply : operating range 6-32 Vdc
- ❖ Connection : Screw pins
- ❖ Fixing : On DIN/B head
- ❖ Operating conditions: Temperature -40+85 °C, humidity 30..90 uR% (non condensing)
- ❖ According to : CE, EN 61000-6-4, EN 61000-6-2, UL 61010-1
- ❖ 3600 Point Data Logging



**Application :** Hygienic Process In Pharmaceutical And Dairy industries

### Hygienic Pressure Transmitter

**Model : TFP310 (Make : Trumen)**

**Specification :**

- ❖ Piezoresistive pressure sensor design
- ❖ Measuring ranges : -1 bar to 40 bar
- ❖ Output : 4...20mA, 0...10V, 0...5V and others
- ❖ Accuracy :  $\pm 0.25\%$ FSO or  $\pm 0.5\%$ FSO
- ❖ Calibrated and temperature compensated
- ❖ Flush diaphragm construction
- ❖ Variety of pressure & electrical connections
- ❖ Operating Temperature Range: -20 to 200 °C

**Application :** Hygienic Process In Pharmaceutical & Dairy Industries



### Pressure Transmitter with Thread Connection

**Model : TFP40 (Make : Trumen)**

**Specification :**

- ❖ Measuring ranges from 100mbar to 600bar
- ❖ Absolute, gauge and sealed gauge
- ❖ Accuracy:  $\pm 0.25\%$ FSO or  $\pm 0.5\%$ FSO
- ❖ Calibrated and temperature compensated
- ❖ Stainless steel construction
- ❖ Piezoresistive pressure sensor design
- ❖ Variety of pressure & electrical connections
- ❖ Output 4...20mA, 0...10V, 0...5V and others

**Application :**

- ❖ Process control systems/ utility
- ❖ Refrigeration and HVAC controls
- ❖ Pumps and compressors



### Compact Liquid Vibrating Fork Level Switch

**Model : LFV 12 (Make : Trumen)**

**Specification :**

- ❖ Industrial power supply (15 to 80 VDC or 15 to 260 VAC)
- ❖ Low power consumption.
- ❖ No calibration required.
- ❖ Threaded & Hygienic process connection.
- ❖ Suitable for side as well as top mounting.
- ❖ Minimum 1/2" process connections
- ❖ High pressure up-to 15 bar
- ❖ High Temperature upto 150 °C available

**Applications :**

- ❖ Flow/No-Flow detection in pipe-lines.
- ❖ Used as a full, empty and demand alarm in fluid containers, tanks containing liquids of various types, including milk & milk products, edible oil, fuel oil, lube oil, brewery, pharmaceutical fluids etc.

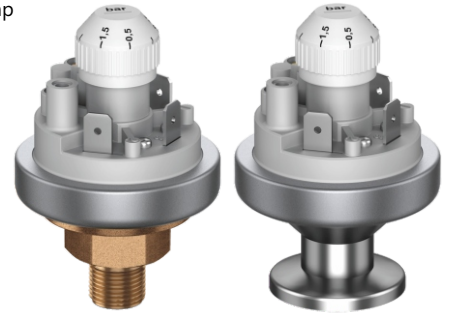


### Pressure Switch with TC Connection & Thread Connection

**Model : 901.6x (Make : Beck GmbH)**

**Specification :**

- ❖ Positive pressure range : -700 mbar to 12 bar
- ❖ Max. operating pressure : 25 bar
- ❖ Switch type : 1 - SPDT
- ❖ Protection class : IP65
- ❖ Process connection : Triclamp



### Air Differential Pressure Switch

**Model : 930.85B (Make : Beck GmbH)**

**Specification :**

- ❖ Pressure range : 100 – 1000 PA
- ❖ Switch type : SPDT (1 NO + 1 NC)
- ❖ Protection standard : IP54
- ❖ Temperature range : -20°C to +85°C
- ❖ Hose connection with 6 mm (OD)

**Application :**

- ❖ HEPA Filter



### Digital Differential Pressure Transmitter

**Model : 990 (Make : Beck GmbH)**

**Specification :**

- ❖ Range : 0 to 100 mmWC (Other on Request)
- ❖ Pressure unit : mmWC, Pa, mbar,
- ❖ Power Supply : screw terminals 24 VAC/VDC
- ❖ Output : 4 ... 20 mA or 0 ... 10 V, 3-wire
- ❖ Switching output : 2 relays with 50VAC/5A (S1) and 250VAC/5A (S2) switching capability
- ❖ Display : Red 7-segment LED display, 4-figure
- ❖ Accuracy :  $\leq \pm 1\%$  of FS
- ❖ IP65 – SS/ MS enclosure with process connection : 2 - Hose
- ❖ Connection with 4 mm OD

**Application :**

- ❖ HEPA Filter



### Liquid Vibrating Fork Level Switch

**Model : LFV (Make : Trumen)**

**Specification :**

- ❖ Compact size.
- ❖ Universal industrial power supply (15 to 80 VDC & 15 to 260 VAC).
- ❖ Low power consumption.
- ❖ No calibration required.
- ❖ Threaded & Hygienic process connection.
- ❖ All liquids from free-flowing to viscosity up-to 10,000cP.
- ❖ Process pressure max. 15 bar.
- ❖ Process temperature max 200 °C.
- ❖ Suitable for side as well as top mounting.
- ❖ Minimum and maximum fail safe field selectable.

**Application**

- ❖ High low detection in Silo/ Vessel
- ❖ Flow/ no-flow detection in pipe-lines





### Capacitance Level Transmitter

**Model : TLC (Make : Trumen)**

**Specification :**

- ❖ Compact size.
- ❖ Rigid rod/flexible rope versions.
- ❖ Wide range industrial dc power supply (15 to 60 VDC).
- ❖ Loop powered device (two wire).
- ❖ No potentiometers – hassle free calibration.
- ❖ Various customized process connections like Threaded/Flanged/Hygienic etc.
- ❖ Remote electronics version available on request.
- ❖ Process temperature max. 200 °C.
- ❖ Process pressure max. 20 bar.
- ❖ Suitable for corrosive liquids.
- ❖ Suitable for top mounting.

**Application :**

- ❖ Free flowing homogeneous liquids like oil, raw water, WFI, DM/DI water etc.



### Compact Turbidity Sensors

**Model : EXspect & Explore (Make : Exner)**

**Specification :**

- ❖ Compact design with integrated amplifier and touch display
- ❖ %-turbidity or custom defined unit
- ❖ Durable sapphire lens
- ❖ Hygienic Design, CIP/SIP-capable
- ❖ LED light source guarantees a durable and stable signal
- ❖ Easy parameterization via display or software EXpert

**Application :**

- ❖ Precise phase separation
- ❖ Control of separators
- ❖ Filter monitoring
- ❖ Colour-independent concentration measurement
- ❖ CIP return line
- ❖ Product/Water Push - to save water and milk
- ❖ Monitoring of product changes
- ❖ Yeast management



### Inline Optical Brix Monitor

**Model : DCM-20 (Make : KxS Technologies)**

**Specification :**

- ❖ Refractive Index range: Full range, nD=1.3200...1.5300 (= definition to 0...100%wt)
- ❖ Output units :Brix/ Conc% / g/cm3 / refractive index unit RIU
- ❖ Measurement precision:±0.025 Brix/%wt
- ❖ Measurement accuracy:±0.0002 refractive index unit RIU
- ❖ Speed of response:1 sec. undamped
- ❖ Temperature compensation: Automatic, individual zero point calibration
- ❖ Hygienic design:3-A Sanitary Standard 46-04 and EHEDG Type EL Class I certified.
- ❖ Process connection: 1.5" and 2.5" sanitary connection, Varinline® and APV tank bottom flange Optional flow cell housing connections with sanitary or DIN/ANSI flanges
- ❖ Process pressure:9-55 bar, 130-800 psi (depending on process connection)
- ❖ Process temperature:-40°C ...100°C continuous process temperature Withstands 130 °C CIP and SIP sequences
- ❖ Sensor protection class:IP67, Nema 4X
- ❖ Power Supply: 24 VDC
- ❖ Output: 2 pcs independent 4-20 mA user configurable outputs

**Application :**

- ❖ Inline Brix monitors drive Dairy evaporators and Spray dryers
- ❖ Inline Brix monitors drive whey protein concentrate membrane filtration systems



### Flush Diaphragm Type Level Transmitter with Indicator

**Model : TFP310+ STR551 (Make : Trumen)**

**Specification :**

- ❖ Piezoresistive pressure sensor design
- ❖ Measuring ranges : -1 bar to 10 bar
- ❖ Output : 4...20mA, 0...10V, 0...5V and others
- ❖ Accuracy : ±0.25%FSO or ± 0.5%FSO
- ❖ Calibrated and temperature compensated
- ❖ Operating Temperature Range:-20 to +150oC
- ❖ Variety of pressure & electrical connections

**Indicator\_STR551**

- ❖ Size : 96x48
- ❖ Customizable linear input (max 16 steps)
- ❖ Universal Power supply
- ❖ Inbuilt TPS
- ❖ OLED Sharp Display
- ❖ Retransmission Output to connect with PLC
- ❖ 2 High and low Level Switch for Safety
- ❖ Modbus communication
- ❖ 3600 points data logger
- ❖ Configuration very easy and it can done through mobile

**Application :** Level Measurement at silo/ Vessel in Pharma/ Dairy Industry



### Milk Silo Level Transmitter

**Model : PiezoSwitch PS (Make : Hengesbach)**

**Specification :**

- ❖ Output signal 4...20mA, 2 wire
- ❖ Max. 2 PNP-switching outputs, 24V DC, max. 50mA,
- ❖ With indicator for switching status
- ❖ LED-display for measurement reading
- ❖ easy configuration and operating modus with 3 buttons
- ❖ Menu-driven configuration on site
- ❖ Free programmable measuring Ranges from -1/0 up to 30bar, TurnDown 4
- ❖ Process connections G1" elastomer-free sealing cone, turnable or EHEDG
- ❖ EL-ASEPTIC certified modular system PZM, with more than 20 different process connection adapters and weld-in sockets
- ❖ Process Temperature -40°C up to 125°C/ 140°C 1h during CIP & SIP-processes
- ❖ Reliable switching functionality

**Application :**

- ❖ Level measurements in tanks with high pressure or vacuum load and low filling height
- ❖ Highly precise measurement of content Pressurized Tanks / Vacuum Measurements with high temperature



### Load Cell/Strain-Gauge Indicator

**Model : STR 561 (Make : Pixsys)**

**Specification :**

- ❖ Multilingual interface with full-text menus for intuitive and fast programming
- ❖ Visualization of process trend or Bar graph
- ❖ Alarm thresholds and process analogue retransmission
- ❖ Size:96x48
- ❖ Universal Power Supply
- ❖ OLED Sharp Display
- ❖ Retransmission Output to connect with PLC
- ❖ 2 High and low Level Switch for Safety
- ❖ Modbus Communication
- ❖ 3600 points data logger
- ❖ Configuration very easy and can done through mobile

**Application :**

- ❖ Connected To Any make of Load Cell



## Air Flow & Velocity Transmitter

**Model : DPT Flow+ FloXact Series (Make : HK Instruments Oy)**

### Specification :

- ❖ Range : 0 ... 1000 Pa
- ❖ Multiple field selectable measurement
- ❖ Measuring Units :
  - ❖ Volume flow : m<sup>3</sup>/s, m<sup>3</sup>/h, cfm, l/s
  - ❖ Velocity : m/s, ft/min
- ❖ Pressure : Pa, inWC, mmWC, kPa, mbar, psi
- ❖ With Autozero function
- ❖ Supply Voltage : 24 VAC or VDC,  $\pm 10\%$
- ❖ Output : 4 ... 20 mA or 0 ... 10 V, 3-wire
- ❖ Accuracy (from applied pressure) : 1%
- ❖ Protection standard : IP54
- ❖ Display : 2-line LCD display
- ❖ Line 1 : Volume or velocity measurement
- ❖ Line 2 : Pressure measurement
- ❖ Length : 100 mm to 450 mm



### Application :

- ❖ Air Flow Measurement in DHS

## Digital Process Indicator

**Model : JIR (Make : Shinko)**

### Specification :

- ❖ 3 Points Alarm output
- ❖ Compact Design
- ❖ Galvanic Isolation 1.5 kV ( Input, Output and Power Supply )
- ❖ Sampling Time 125 ms
- ❖ 18 type Input signal Selection
- ❖ User-Friendly Operation and Configuration
- ❖ Password Protection for Configuration
- ❖ IP66 Protection Class for Front Flush
- ❖ Standard Retransmission Output ( 4-20 mA, 12000-bit Resolution)
- ❖ CE and UL approved
- ❖ Lower Power Consumption (8VA), Longer Life of Electronics Modules
- ❖ Loop Break & Sensor Burnout Alarm
- ❖ Multi-input:total 18 types of input



## Exner Retractable Fittings

**Model : EXstatic 310, EXstatic 311 (Make : Exner)**

### Specification :

- ❖ Designed according to hygienic criteria
- ❖ Stainless steel AISI 316L / 1.4404
- ❖ EPDM sealings with FDA and USP VI approval
- ❖ Up to 10 bar and 140 °C
- ❖ Protection cap for cable connection
- ❖ Process connections for hygiene applications
- ❖ Static probe housing with Ingold connection (DN25)
- ❖ Static probe housing with clamp connection
- ❖ Excellent stainless steel surface qualities (up to Ra <0.37  $\mu$ m)
- ❖ Available with or without protection cage
- ❖ Suitable for sensors with 120 mm length and PG13.5 connection



### Application :

- ❖ Food
- ❖ Pharmaceutical
- ❖ For all kind of  $\varnothing 12/120$ mm sensors with thread PG13.5 (pH-glass- and ISFET sensors, conductivity- or temperature sensors, turbidity and other optical sensors)

## PID Controller

**Model : BCS Series (Make : Shinko)**

### Specification :

- ❖ Convenient Initial setting mode!
- ❖ AT on startup function!
- ❖ Simplified program control!
- ❖ Simplified converter function!
- ❖ A variety of event input/ output functions!
- ❖ Large, Easy-to-view, 5-digit PV, SV displays!
- ❖ Compact, 60 mm-deep control panel interior!
- ❖ Simple settings from a PC
- ❖ Drip-proof/Dust-proof IP 66
- ❖ Control O/P : Relay contact 1a, Non-contact voltage(for SSR drive), Direct current (as per ordering)
- ❖ Multi-input : Total 18 types of input
- ❖ Sampling time 125 ms
- ❖ Password protection for configuration



## DIN Rail Temperature Transmitter Signal Isolator

**Model : DCL 33 (Make : Shinko)**

### Specification :

- ❖ Multi-input:total 18 types of input
- ❖ Loop Break Alarm output
- ❖ Compact Design
- ❖ Galvanic Isolation 1.5 kV
- ❖ Sampling Time 125 ms
- ❖ User-Friendly Operation & Configuration
- ❖ Password Protection for Configuration
- ❖ Calibration of Transmitter by Key Pad



### Application :

- ❖ Universal Isolated Digital Temperature Transmitter
- ❖ Digital Temperature Switch
- ❖ Universal Signal Isolator

## Special Drive for Gate Opening and Closing of DHS

**Model : PSE200 (Make : Halstrup Walcher)**

### Specification :

- ❖ Release-input (optional) and position report ensure high level of functional security
- ❖ Variable positioning range up to 50 rotations
- ❖ Position: Horizontal construction
- ❖ Protection class : IP 55
- ❖ Position feedback: 0 .. 10 V (floating contact "position reached")
- ❖ Output shaft:12 mm solid shaft with flattening
- ❖ Positioning accuracy:2 % of positioning range
- ❖ Power supply:24 VDC

